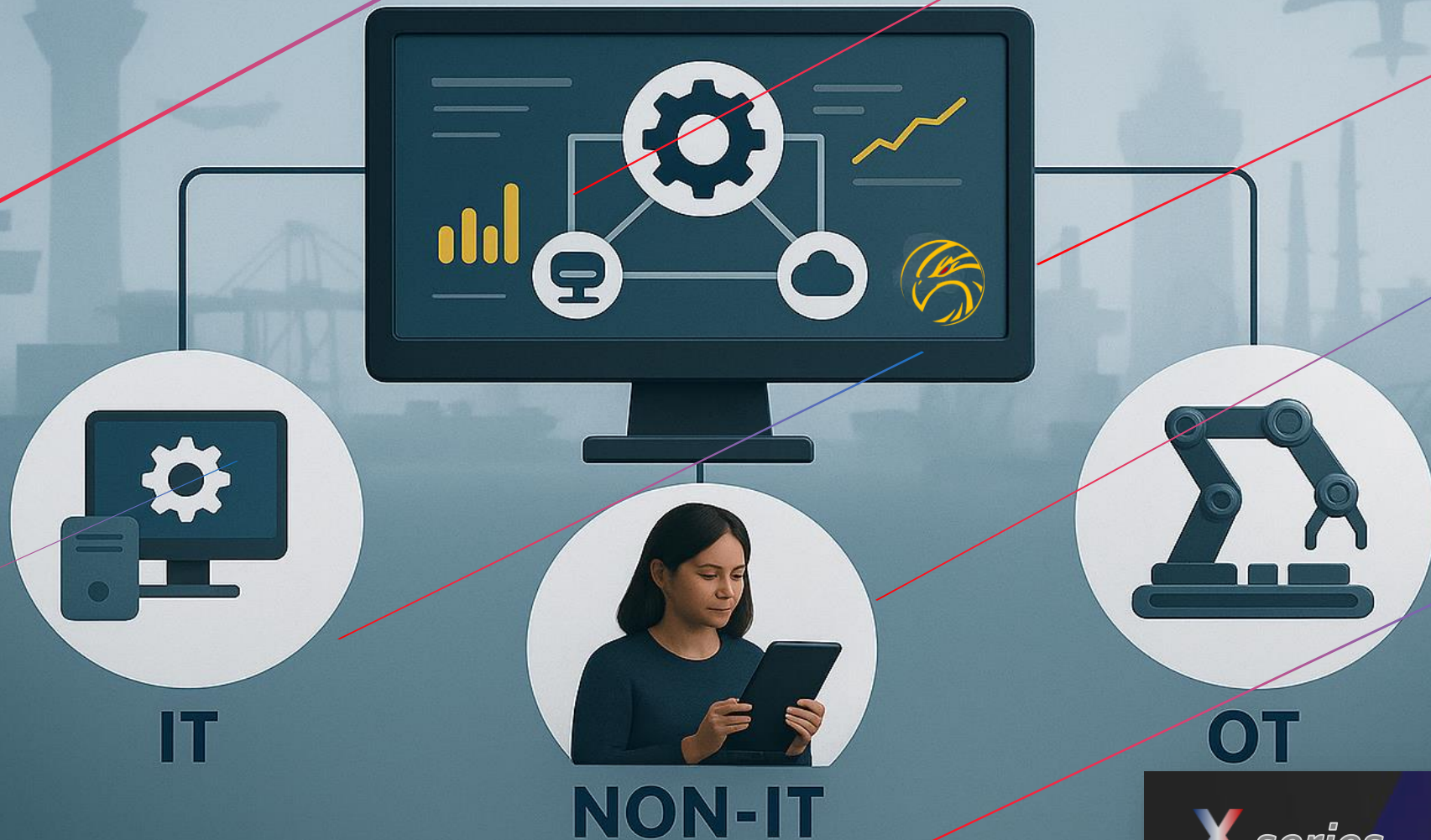


Unified Network Management System

Hardware Datasheet



HAWK *Series*

Enterprise Edition

Models: X and Xe

Part No: **AITS25HWX** [BASE Version: AITS24HWX, AITS23HWX]

Key Features

Feature	Description
	Equipped with latest Intel Xeon / AMD EPYC processors with ECC memory support up to 2/4/6 TB, ensuring reliability and performance for mission-critical workloads. Single / Dual / Quad Sockets.
Redundant Power Supply	80+ Platinum certified hot-swappable power supplies for maximum uptime and energy efficiency. Optional Redundant set PSU available for Xe model.
Flexible Storage & Expansion	Support for SAS, SATA, SSD and NVMe drives with RAID options. X model offers up to 12 bays; Xe supports up to 24 bays for data center scalability.
Advanced Security	Integrated TPM 2.0 and Secure Boot. Xe model further supports Zero Trust (ZTNA) for compliance with government-Industrial grade deployments.
Integrated Remote Management	Built-in BMC with IPMI 2.0 and Redfish for out-of-band management, enabling administrators to monitor, troubleshoot, and update remotely.
Disaster Recovery & High Availability	Xe model supports full DR with RPO/RTO objectives, automated failover and backup recovery for uninterrupted services.
Certified Compliance	Meets global standards BIS, CE, FCC etc for telecom and government deployments.



Hardware Datasheet



Embedded Linux



Technical Specifications

CATEGORY	SPECIFICATION (X)	SPECIFICATION (XE)
CPU	Intel Xeon / AMD EPYC	Intel Xeon / AMD EPYC
RAM*	DDR4/DDR5 ECC up to 2TB	DDR4/DDR5 ECC up to 6TB
STORAGE*	SAS/SATA/SSD with RAID	SAS/SATA/SSD + NVMe
BAYS	Up to 12 HDD/SSD bays	Up to 24 HDD/SSD bays
POWER SUPPLY	Redundant 80+ Platinum	Redundant 80+ Platinum (Hot-swap) [2+2]
ADDITIONAL POWER SUPPLY	Optional redundancy module	Dual + optional PSU support
LAN PORTS	Dual/Quad GbE + 10G / 10 G SFP+	Quad GbE + 25G SFP+
USB PORTS	2 × USB 3.0	4 × USB 3.0 / 2.0 mixed
REMOTE MGMT*	BMC, IPMI 2.0, Redfish	BMC, IPMI 2.0, Redfish
RACK COMPATIBILITY	1U/2U/4U	4U/6U/8U
HSN CODE	8517	8517
NOTE	X Compact model is 1U model. Not Included.	Check Sales Team.

